

Please rate this document after reviewing at the bottom of this page.

REMOVAL

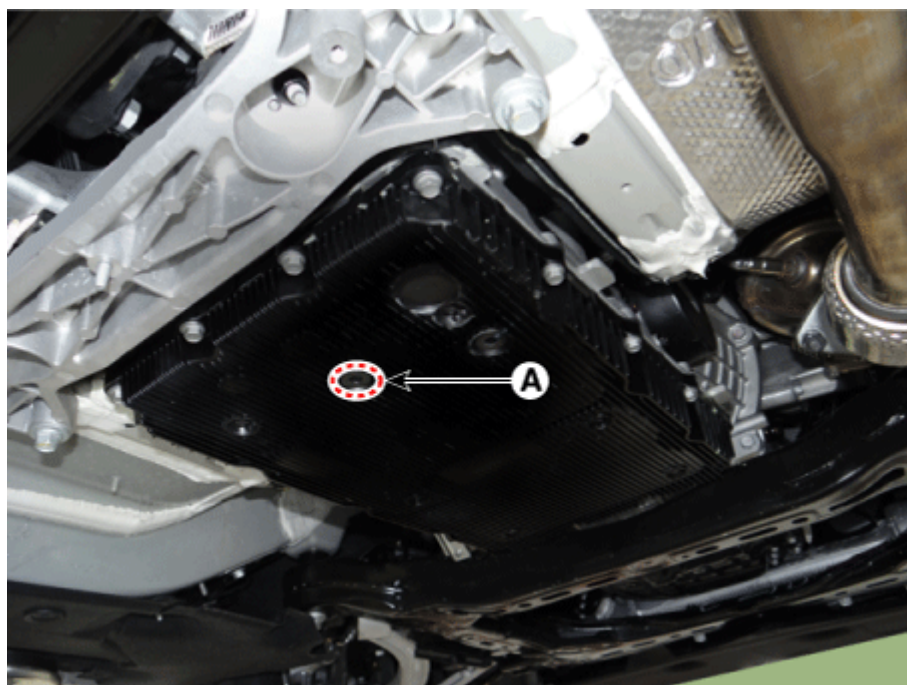
NOTICE

- Maintain clean condition so that foreign substance does not get into the automatic transmission.
- Use a coated apron, latex gloves, and stainless tray to prevent foreign substance from getting into the transmission.

1. Remove the under cover.
(Refer to Engine Mechanical System - "Engine Room Under Cover").
2. Remove the ATF drain plug (A), allow the fluid to drain out and then reinstall the drain plug.

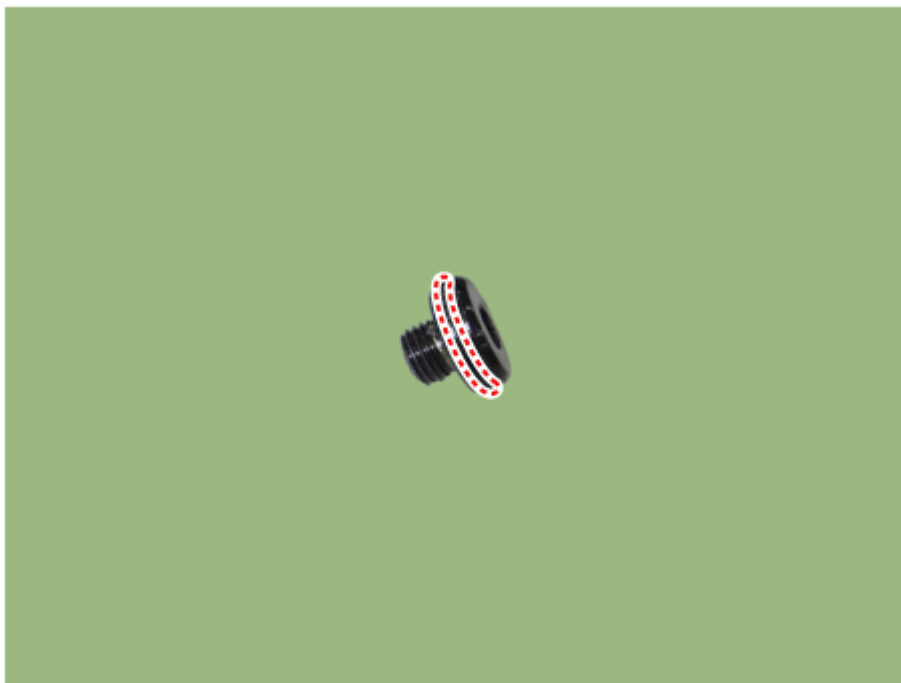
Tightening torque :

22.6 - 24.5 N·m (2.3 - 2.5 kgf·m, 16.6 - 18.1 lb·ft)

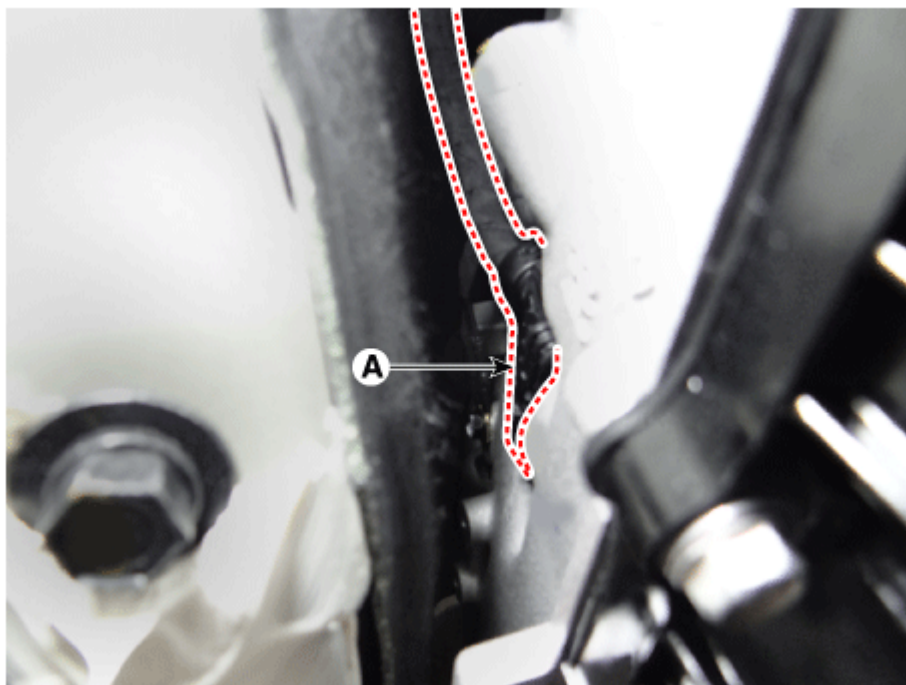


NOTICE

- ATF can be reused. Collect it in a clean beaker.
- The existing ATF drain plug O-ring must be replaced with a new one. (Do not reuse it.)



3. Disconnect the main connector (A).

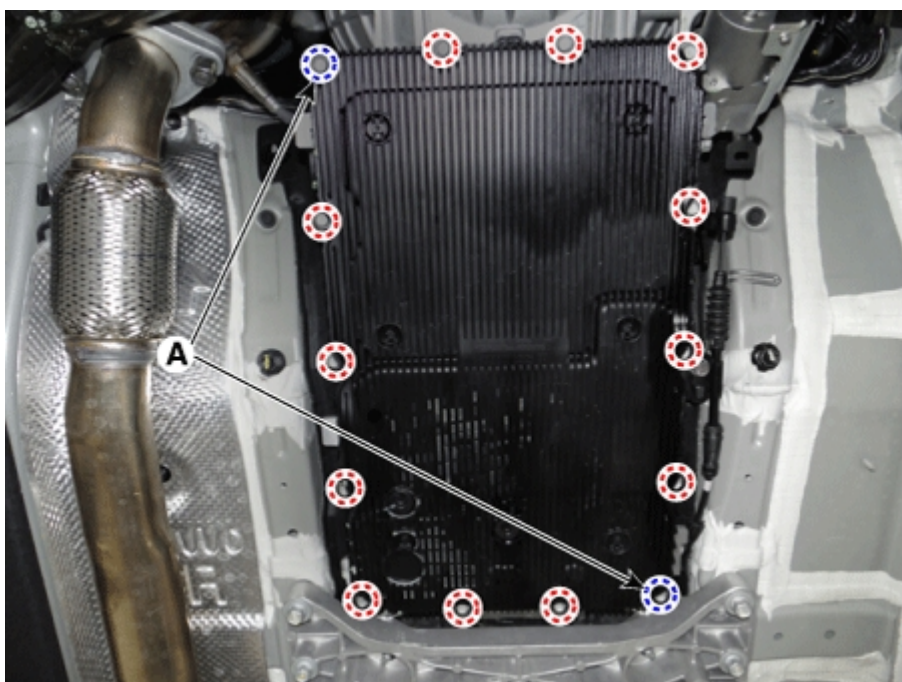


4. Remove the valve body cover.

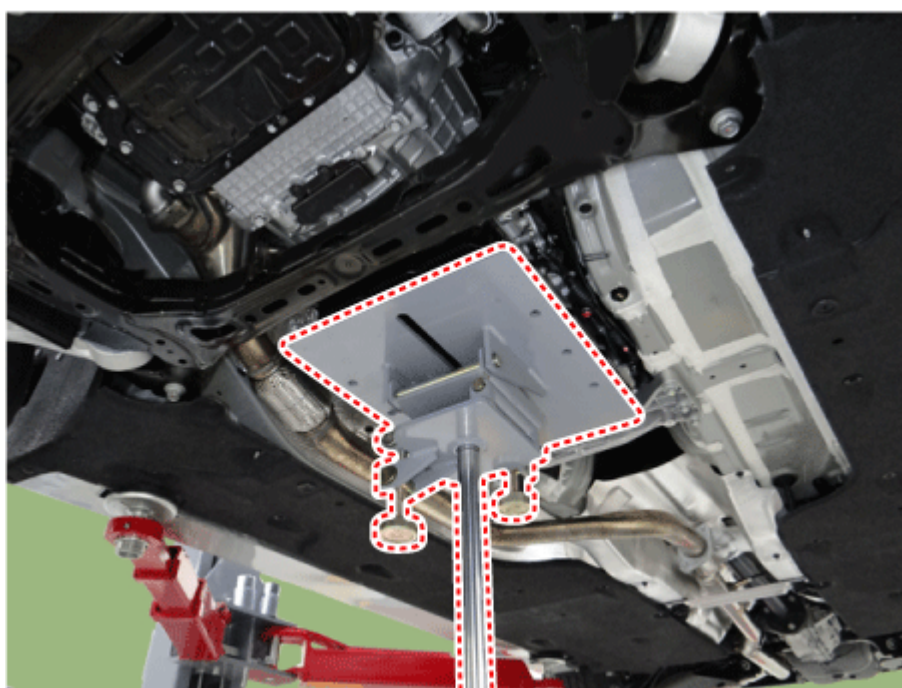
- (1) Loosen the all valve body mounting bolts except for the bolts (A) in the corner.

Tightening torque :

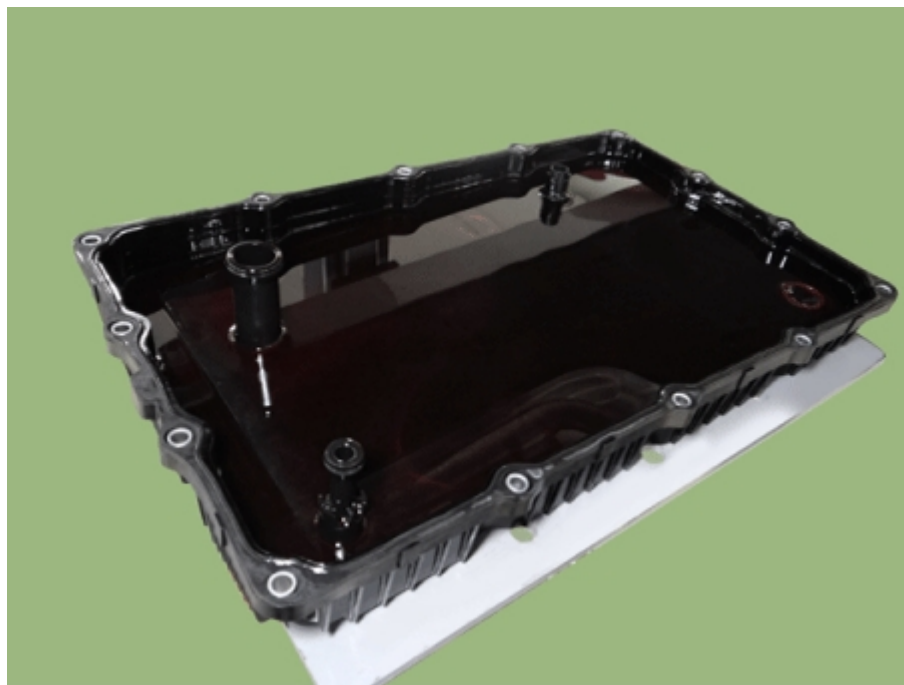
13.7 - 15.7 N·m (1.4 - 1.6 kgf·m, 10.1 - 11.6 lb·ft)



- (2) Loosen the two bolts (A) in the corner after supporting the valve body cover on a jack and then remove the valve body cover by lowering the jack slowly.

**NOTICE**

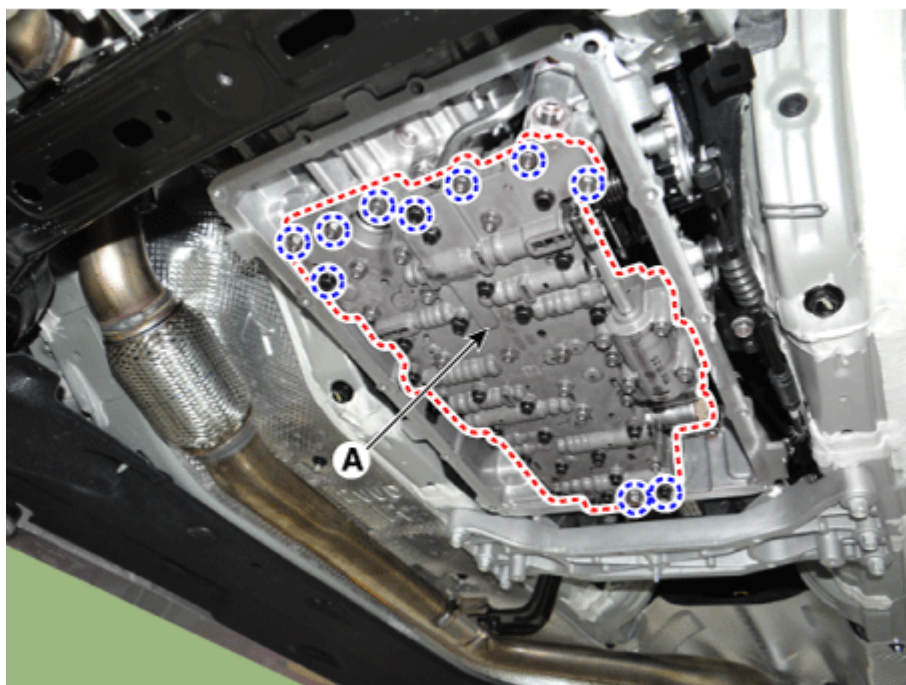
Be careful when removing the valve body cover because the remaining ATF remains in the valve body cover.



5. Remove the valve body assembly (A) after loosening the bolts.

Tightening torque :

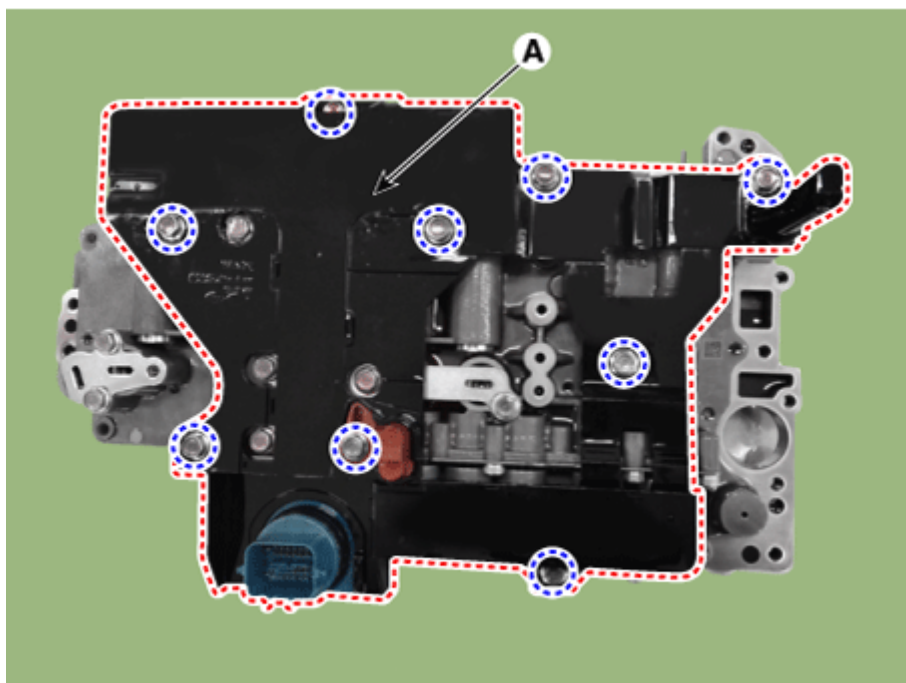
9.8 - 11.8 N·m (1.0 - 1.2 kgf·m, 7.2 - 8.7 lb·ft)



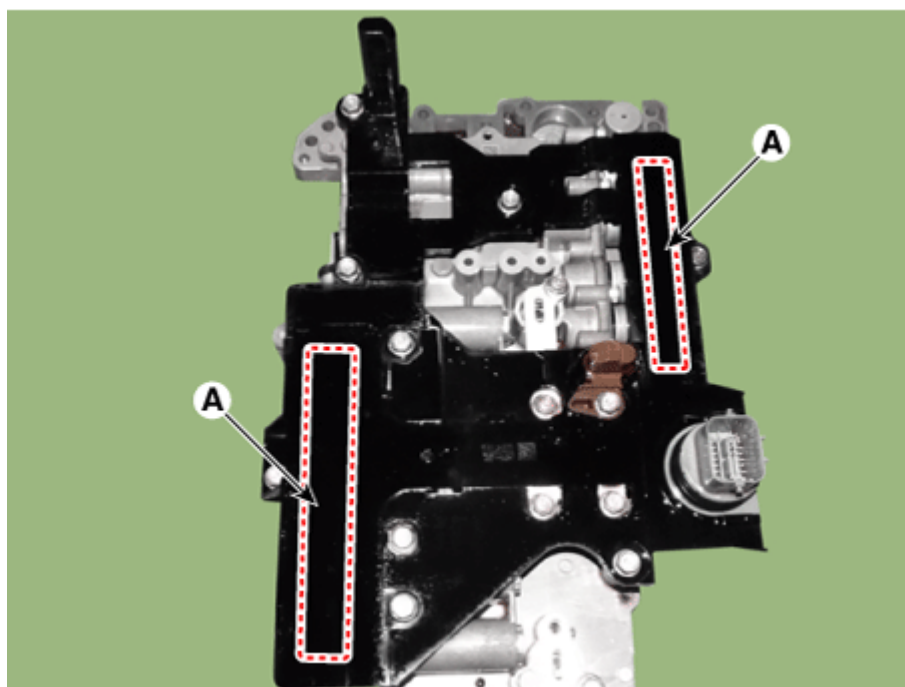
6. Remove the E-module (A) after loosening the bolts.

Tightening torque :

9.8 - 11.8 N·m (1.0 - 1.2 kgf·m, 7.2 - 8.7 lb·ft)

**NOTICE**

When installing, after mounting the E-module, lightly tap the connector part (A) to insert the connector certainly and then tighten the bolts.

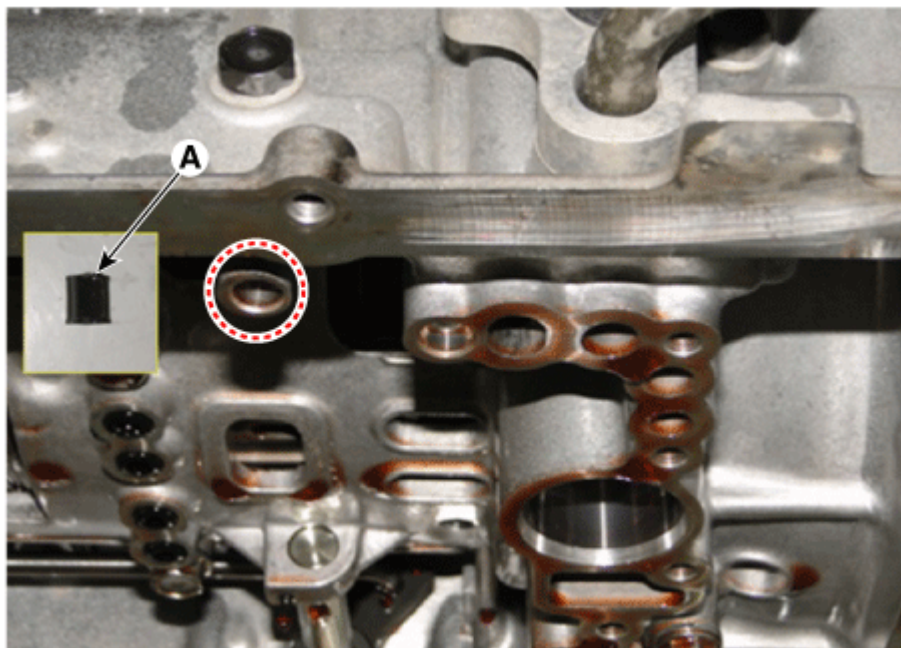


INSTALLATION

1. Install in the reverse order of removal.

NOTICE

- Check if the pipe (A) is inserted on the marked area before mounting the valve body assembly.



2. Refill the automatic transmission with fluid.
(Refer to Hydraulic System - "Fluid")

*** Thanks for your cooperation for the more quality. Please surely rate this document before closing.**